



PETERSBURG BOROUGH | PETERSBURG MEDICAL CENTER
EMERGENCY OPERATION CENTER UNIFIED COMMAND

JOINT MEDIA RELEASE: COVID-19 | EOC UNIFIED COMMAND SITUATION UPDATES

Date: May 8, 2020
From: Petersburg Emergency Operations Center (EOC)
Contact: Karl Hagerman, Petersburg Borough EOC Incident Commander
Phil Hofstetter, Petersburg Medical Center Incident Commander

FOR IMMEDIATE RELEASE

This brief responds to questions and provides an update on information from the Emergency Operations Center Unified Command (EOC) and its partner agencies. Contact the EOC with your questions at eoc@petersburgak.gov.

FACE COVERING

The local facial covering mandate expired May 5. The Petersburg Emergency Operation Center still strongly encourages people to cover their faces when around non-household members. Alaska Mandate 16 still requires facial coverings for many businesses for both employees and customers. Request masks by calling the library at 772-3349 or visiting psgcovidinfo.net/mask-request.

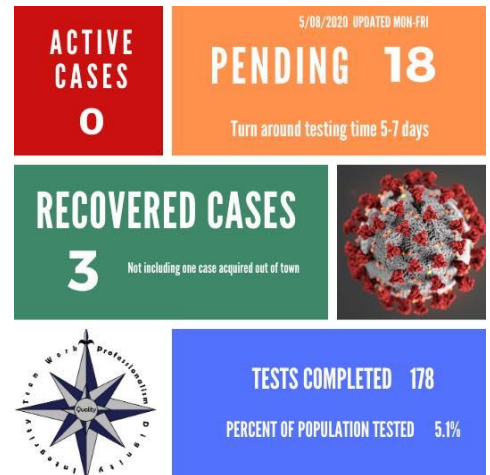
REOPENING ALASKA PHASE 2

With the state's gradual lifting of restrictions, the state emphasized a greater need for individuals to adhere to general preventive guidelines. It's up to the general public to ensure there isn't a spike in the number of COVID-19 cases:

- Continue social distancing 6-10 feet away from non-household members.
- Cloth face coverings are strongly encouraged.
- Wash your hands frequently and regularly sanitize frequently-touched surfaces.
- Utilize telephone and online ordering for contactless pickup and delivery.

These preventive measures are working and are why Alaska and Petersburg have low numbers of COVID-19 cases. It's important to keep doing all the things that have helped flatten the curve. If you're 65 or older, or someone with an underlying medical condition, continue to stay home as much as possible. Petersburg Borough encourages all business owners to proceed slowly and judiciously so that Petersburg's economic reopening can be successful.

As Alaska and Petersburg gear up to open for business, please keep in mind good infection control habits to protect your staff and your customers. Managers and owners: watch your staff for signs of



illness and encourage your employees to call the COVID hotline at 772-5788 for guidance and possible testing. The more testing done in Petersburg helps control the spread to others.

KEEP YOUR BUSINESS SAFE AND HEALTHY

We all want a strong and safe Petersburg. As a business providing services during this crisis, you have a power to influence the future of our community. Join us in helping keep your employees, your customers, and our community healthy. COVID-19 is a new disease with evolving circumstances. Guidance is ever changing. The EOC has developed a resource page on our website to help you navigate this challenging situation www.psgcovidinfo.net/reopening. We want to partner with local businesses in keeping Petersburg healthy. If your business would like more information or to partner with us to keep your business safe, please contact us at eoc@petersburgak.gov. Thank you for your service and commitment to our community!

PETERSBURG BOROUGH UPDATES

Phase 2 of the State of Alaska's reopening plan includes swimming pools reopening to 50 percent capacity, as well as museums and libraries reopening to 25 percent capacity, according to a state overview. Before these and other Petersburg Borough facilities can reopen, the Incident Command Team and the Assembly will hear more information and continue discussion on how to responsibly move forward. The Petersburg Borough will not open public facilities, like pools and libraries, until the Assembly has had time to understand the Governor's approach.

GRADUATION UPDATE FROM THE PETERSBURG SCHOOL DISTRICT

Graduation plans are coming together. We are creating a video production with individual students to be shown on graduation day, May 26. It will be livestreamed through YouTube for all families and friends to watch. We are working on a plan for graduates to watch the video "together" in their cars. There will also be a community "Graduation Parade" on May 26 from 6:00-7:00 pm with all graduates driving a specific route around Petersburg so community members can cheer them on from their yards or cars parked along the road. More details to come!

PETERSBURG MENTAL HEALTH SERVICES'S (PMHS) SWISH CARD CHALLENGE

In an effort to alleviate some of the financial burden of living in rural SE Alaska during the COVID-19 pandemic, PMHS is holding the "SWISH Card Challenge". For every 2 cards donated by community members, PMHS will donate one. These cards will be given to say thank you to some of our local essential employees & to help individuals and families with food insecurities, which in turn will help keep shopping local & also support local youth. Contact Becky Turland for more information beckyturland@raincountry.org

STAY INFORMED

SIGN UP for CodeRED at www.petersburgak.gov

LISTEN to the KFSK radio show M/W/F at 12:30

READ the newspaper for updates

CHECK these websites daily

- Petersburg Unified Command Information Hub: www.psgcovidinfo.net
- State of Alaska COVID-19 Dashboard: www.coronavirus.alaska.gov
- CDC: www.cdc.gov