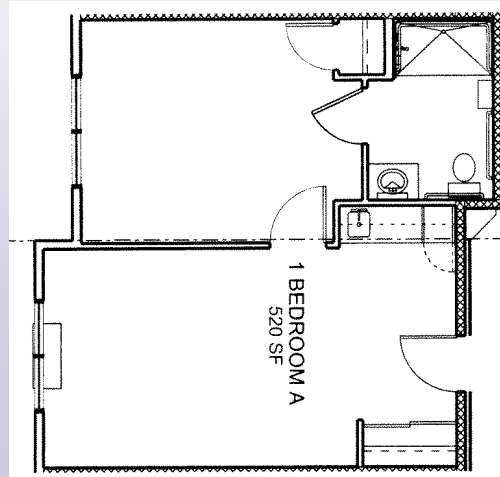




The apartments are spacious with a well designed floor plan. Amenities including a social hall, large dining room, reading room, and laundry facilities, are all easily accessible. You can enjoy your privacy or get involved with group activities, all within a secure, home-like environment.



Assisted Living
Typical Unit

Rates

Private Pay starting at
\$5619.00 for basic services
\$350.00 for food &
\$1400.00 for rent

Medicaid Waiver & low income residents welcome.
Rates are dependent upon financial information.

Personal Care Quality Living



MOUNTAIN VIEW ASSISTED LIVING

16 N. 12th Street

PO Box 1530

Petersburg, AK 99833

Phone: (907) 772-2445

Fax: (907) 772-2435

Email:
dcasey@petersburgak.gov



Derrick Casey, Administrator

Mt. View is staffed by compassionate, hard-working individuals intent on making your life easier...



Velkommen to Mountain View, where housework and chores are a thing of the past. Our staff and professional care services will enhance your quality of life and reinforce a sense of community.



Services

- 24 hours, on-site care providers
- Emergency response system
- Nutritious meals daily
- Coordinated activities and social events
- Housekeeping and laundry
- Medication assistance
- Transportation assistance
- Apartment and grounds maintenance
- 24 hour security system
- Utilities



Mountain View is situated in Petersburg, within the beautiful Inside Passage. The Tongass National Forest, glaciers and nearby fjords provide the perfect setting. Thrice weekly van rides to town offer you the opportunity to enjoy the amenities provided along our quaint Main Street. Enjoy watching birds and deer right outside your window and participate in the Community garden!



Your Home

Our professional staff is ready to offer you any assistance you may need, yet respect your independence and privacy. Everything we do, from our social activities to our family-style dining, is designed to provide a warm and enriching experience. Enjoy an active retirement lifestyle with our wealth of amenities and services.

