

**STANDARD CONSTRUCTION SPECIFICATIONS  
MISCELLANEOUS  
DIVISION 65  
INDEX OF STANDARD DETAILS**

65-1	Field Book Index
65-2	Control Reference Points
65-3	Monument Recovery and Horizontal Control
65-4	Vertical Control
65-5	Clearing Limits
65-6	X-Sections/Slope Stakes
65-7	Grade Stakes/Blue Tops
65-8	Drainage Structures
65-9	Retaining Wall Structures
65-10	Storm Sewer Layout
65-11	Drainage Stakes
65-12	Curb and Gutter Stakes
65-13	Water Line Layout

INDEX

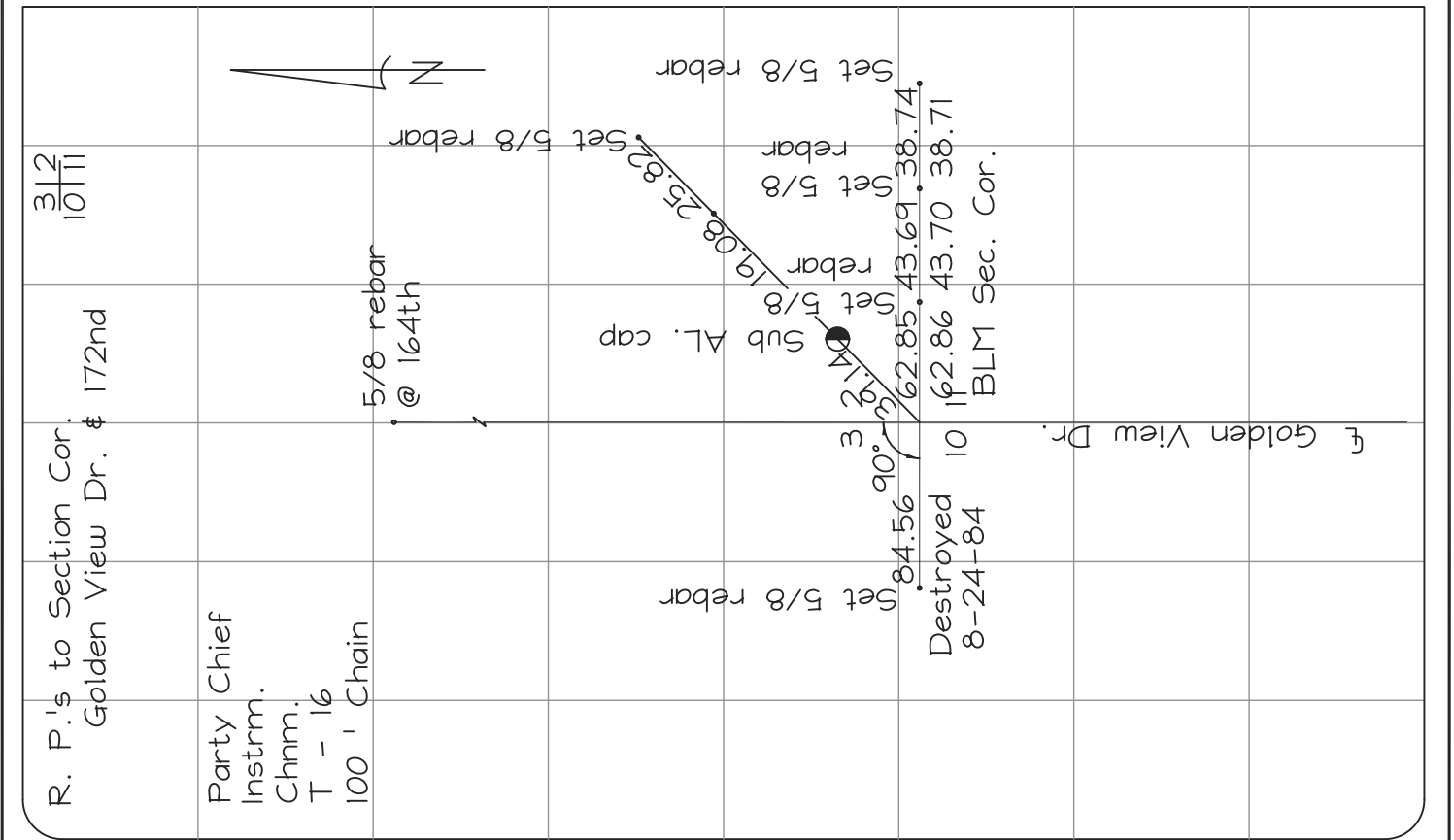
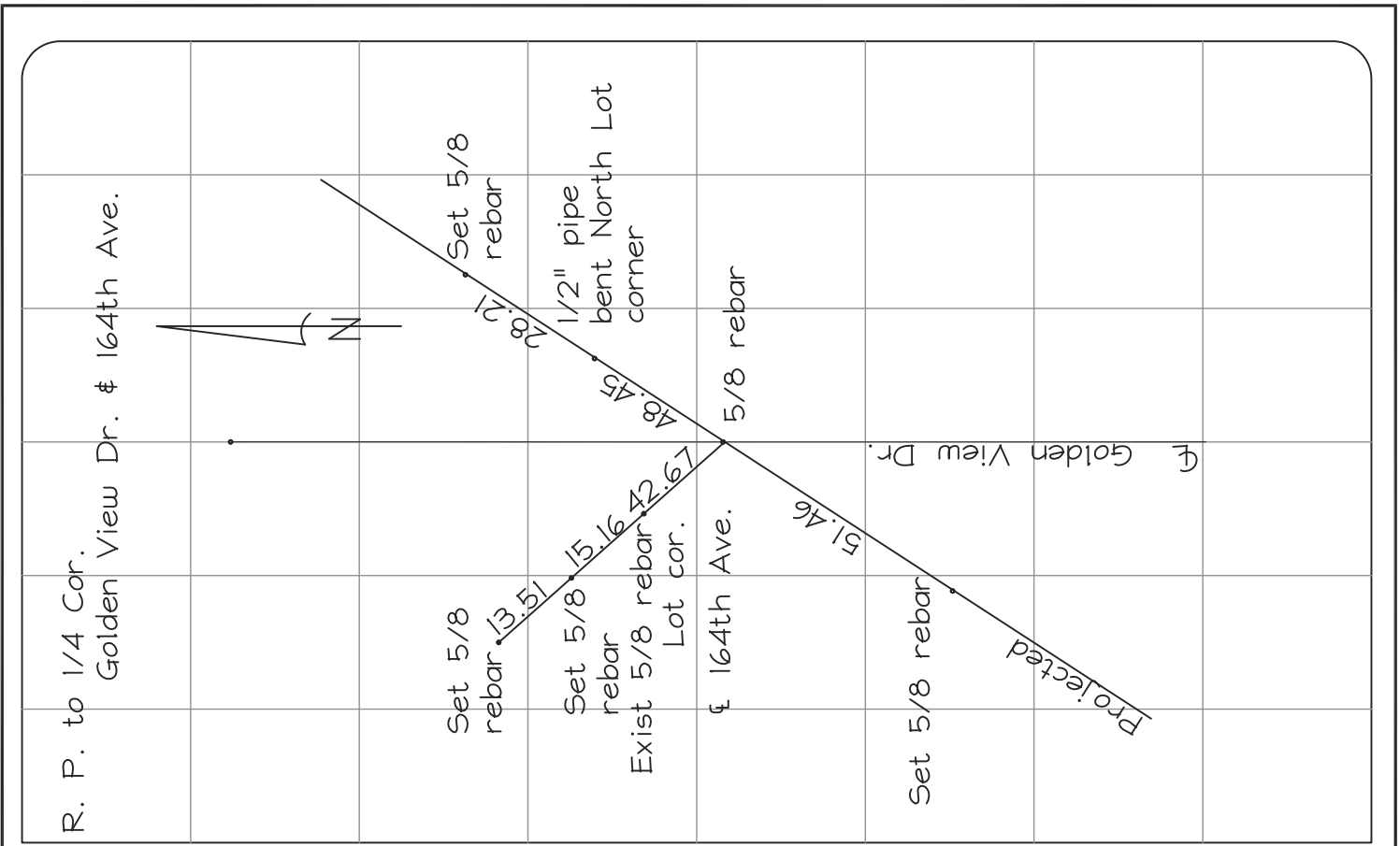
Page	Location	Date	Description
2	Third Ave.	9-10-06	Begin retracement & establishment of "P-line"
3-6	Third Ave.	9-11-06	Complete "P-line" & determine falling at Reeve Blvd.
7-12	Third Ave.	9-12-06	Tie property corners from "P-line"
13-16	Third Ave.	9-13-06	Establish & Construction from "P-line"
17	Third Ave	9-14-06	" "
18-20	" "	9-17-06	Slope stakes S.E. corner Third & Post
21-23	" "	9-18-06	R.P. 20+00 & Nelchina, 26+50 & 31+0335
24-27	" "	9-19-06	R.P.'s & S.I.'s
28-40	" "	10-1,10-2-06	Luminaires
41	" "	10-3-06	R.P. & S.I. 3rd & Post
42	" "	10-4-06	Stake Load Center
43-50	" "	10-5-06	Curb & Gutter Staking
51-53	" "	10-6-06	Stake Load Center & Luminaires
54-55	" "	10-15-06	J-Boxes, Post & Third, Concrete St. & Third grades
56	" "	10-22-06	P.P. Elevations
57	" "	11-9-06	Storm Drain MH
58-70	" "	7-23-07	Before & after Ex X-S
71	" "	7-27-07	As Built Curb
72-73	" "	7-30-07	Curb & gutter Rt. Side 17+18 to Nelchina
74-75	" "	8-3-07	Restake C&G on Nelchina St.
76-77	" "	8-3-07	Curb & gutter 3rd Ave.
78-79	" "	8-4-07	Curb & gutter Post Rd.



SCALE: NTS  
 APPROVED:  
 REVISED: 10/07

FIELD BOOK INDEX

SECTION # 65.02  
 DETAIL # 65-1



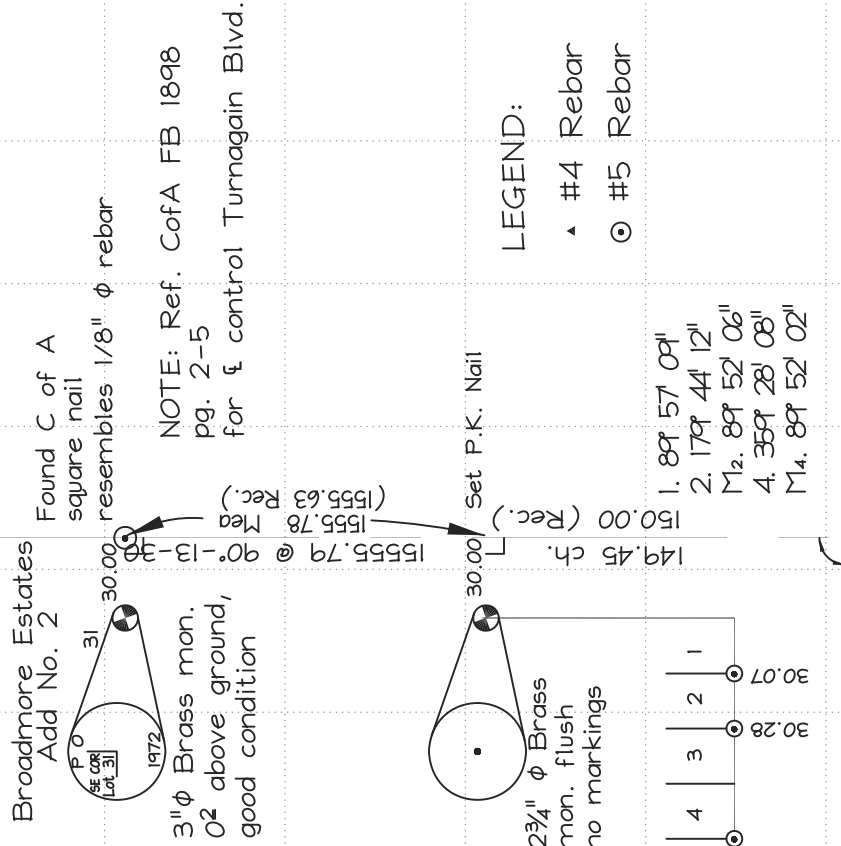
MUNICIPALITY  
  
 OF ANCHORAGE

SCALE:  
 NTS  
 APPROVED:  
 REVISED:  
 10/07

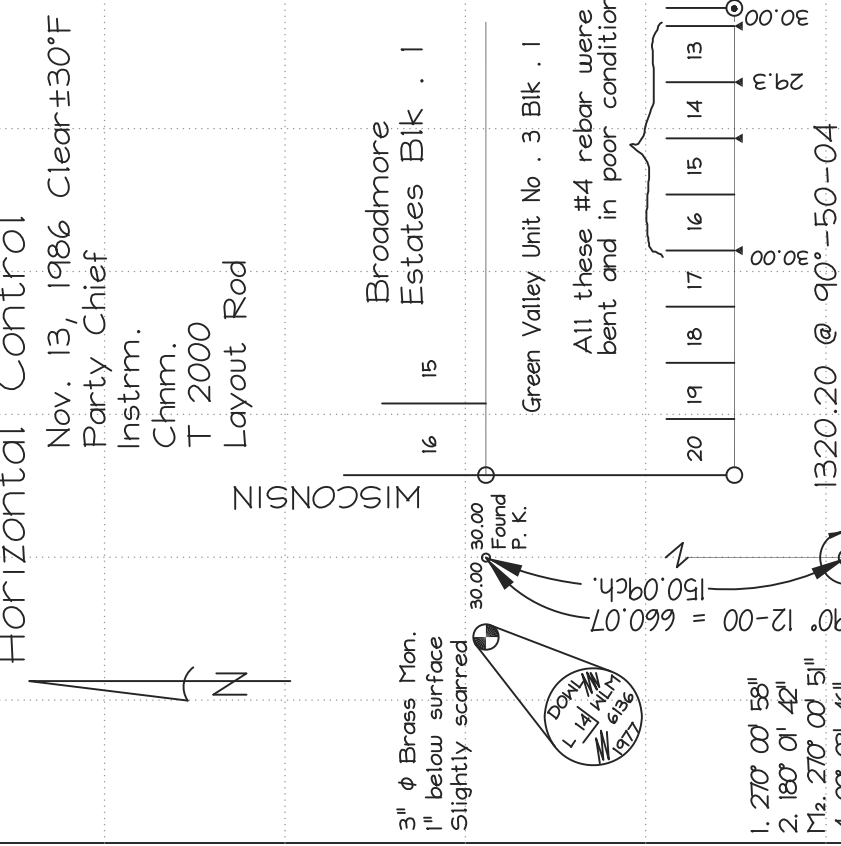
# CONTROL REFERENCE POINTS

SECTION #  
 65.02  
 DETAIL #  
 65-2

2058 52



West 42nd. Ave. (Place)  
Horizontal Control



SCALE:  
NTS

APPROVED:

REVISED:  
10/07

# MONUMENT RECOVERY AND HORIZONTAL CONTROL

SECTION #  
65.02

DETAIL #  
65-3

2058 52

Clear 20°F  
Party Chief  
Instrm.  
Rodm.

1/26/07

TBM DESCRIPTION

TBM

<62.20> Fnd. BC Mo@ A#W Root Beer Bldg

<76.85> Fnd. BC@ Dimond H.S. as per MOA  
BM Book Pg. 213

TBM LOOP FOR 100th AVE. TOPO

Note: We peg our level immediately before beginning this loop, check ±0.0005 in 400'

Wild NA# #502261

ELEV

-

Hi

+

Sta

TP	0.30	27 <sup>88</sup>	12.30	27 <sup>38</sup>
TP	3.21	39 <sup>68</sup>	7.51	36 <sup>47</sup>
TP	1.43	43 <sup>98</sup>	14.47	42 <sup>55</sup>
TP	1.74	57 <sup>02</sup>	6.68	55 <sup>28</sup>
TP	5.51	61 <sup>96</sup>	9.95	56 <sup>45</sup>
GAAB 39	4.20	66.40	4.15	62 <sup>22</sup>
TP	7.11	66 <sup>37</sup>	2.49	59 <sup>26</sup>
TP	3.79	61 <sup>75</sup>	9.04	57 <sup>96</sup>
TP	0.02	67 <sup>00</sup>	10.34	66 <sup>98</sup>
TP	0.23	77 <sup>32</sup>	5.81	77 <sup>09</sup>
TP	6.50	82 <sup>90</sup>	5.48	76 <sup>40</sup>
TNH15	5.03	81 <sup>88</sup>		

MUNICIPALITY



OF ANCHORAGE

SCALE:  
NTS

APPROVED:

REVISED:  
10/07

# VERTICAL CONTROL

SECTION #  
65.02

DETAIL #  
65-4

2026 04

5/29/07  
 Sunny 60°F  
 Party Chief  
 Chainm.  
 RT & Prism  
 100' Rag Tape

Station	Lt	Rt.
45+00	20 <sup>0</sup>	20 <sup>0</sup>
46+00	20 <sup>0</sup>	20 <sup>0</sup>
47+00	20 <sup>0</sup>	20 <sup>0</sup>
48+00	20 <sup>0</sup>	20 <sup>0</sup>
49+00	20 <sup>0</sup>	20 <sup>0</sup>
50+00	20 <sup>0</sup>	20 <sup>0</sup>
50+50	20 <sup>0</sup>	20 <sup>0</sup>
51+00	20 <sup>0</sup>	20 <sup>0</sup>
52+00	20 <sup>0</sup>	20 <sup>0</sup>
52+50	20 <sup>0</sup>	20 <sup>0</sup>
52+70	20 <sup>0</sup>	20 <sup>0</sup>
End Exc.		

UNIVERSITY DRIVE  
 STAKE EXCAVATION LIMITS

EXCAVATION LIMITS (FROM  $\varphi$ )

Station	Lt	Rt.
34+78	30 <sup>0</sup>	30 <sup>0</sup>
Begin Exc.		
35+35	29 <sup>2</sup>	39 <sup>0</sup>
36+00	29 <sup>1</sup>	34 <sup>8</sup>
36+50	28 <sup>7</sup>	27 <sup>0</sup>
37+00	58 <sup>2</sup>	27 <sup>0</sup>
37+50	57 <sup>9</sup>	27 <sup>0</sup>
38+00	27 <sup>5</sup>	27 <sup>0</sup>
38+50	27 <sup>9</sup>	-
38+63.2	-	30 <sup>8</sup>
39+00	27 <sup>0</sup>	27 <sup>0</sup>
39+13.2	27 <sup>0</sup>	27 <sup>0</sup>
40+00	27 <sup>0</sup>	27 <sup>0</sup>
41+00	27 <sup>0</sup>	27 <sup>0</sup>
41+50	27 <sup>0</sup>	27 <sup>0</sup>
42+00	25 <sup>6</sup>	25 <sup>6</sup>
43+00	22 <sup>8</sup>	22 <sup>8</sup>
44+00	20 <sup>0</sup>	20 <sup>0</sup>

MUNICIPALITY



OF ANCHORAGE

SCALE:  
 NTS

APPROVED:

REVISED:  
 10/07

**CLEARING LIMITS**

SECTION #  
 65.02

DETAIL #  
 65-5

1958 015

GRADE STAKES 5/24/07

Party Chief NI-2  
Chainman Philly Rod  
Instrumentman Rag Tape

X-SECTIONS BEFORE EXCAVATION/  
GOLDENVIEW DRIVE CLOUDY 58°

STA.	+	HI	-	ELEV.
26+00		FO <sup>16</sup> 670 <sup>76</sup> 6 <sup>71</sup>	670 <sup>4</sup> 7 <sup>1</sup>	669 <sup>8</sup> 670 <sup>9</sup> 7 <sup>4</sup> 7 <sup>4</sup> 6 <sup>6</sup>
☐ Sub.		30	25	13 10 6
670.92		ER	TOE	ER
				C-0 <sup>2</sup> 5 <sup>0</sup> C-2 <sup>1</sup> 1/2:1 3 <sup>2</sup> C-0 <sup>6</sup> 6 <sup>2</sup> C-0 <sup>5</sup> 20 <sup>2</sup>

25+50		C-0 <sup>8</sup> 5 <sup>0</sup> C-2 <sup>2</sup> 1/2:1	673 <sup>5</sup> 4 <sup>0</sup> 26	672 <sup>9</sup> 4 <sup>6</sup> 17	674 <sup>0</sup> 3 <sup>5</sup> 6
☐ Sub.		30	26	17	10 6
673.23		ER	ER	ER	ER
					C-1 <sup>3</sup> 5 <sup>0</sup> C-2 <sup>8</sup> 1/2:1 4 <sup>2</sup> C-1 <sup>3</sup> 7 <sup>2</sup> C-1 <sup>2</sup> 21 <sup>2</sup>



SCALE: NTS  
APPROVED:  
REVISED: 10/07

X-SECTIONS/SLOPE STAKES

SECTION # 65.02  
DETAIL # 65-6

TP 2.03 677.47  
687.30 | 1.86 675.44

2150 42

Party Chief  
Chainman  
Instrumentman

NI2  
Philly Rod

RT. 5 <sup>79</sup>	
<u>27<sup>0</sup></u> ƒ Rd    142 <sup>51</sup> ✓	
	C-1 <sup>0</sup> FG 5 <sup>66</sup>
No B.TOP ƒ Rd 142 <sup>64</sup> ✓	<u>27<sup>0</sup></u>
<u>27<sup>0</sup></u> ƒ Rd    No B.TOP	
<u>27<sup>2</sup></u> ƒ Rd    No B.TOP	
143.61	
RT.143.59	
Elev. from Pg. II	
<u>27<sup>2</sup></u> ƒ Rd    No B.TOP	C-0 <sup>4</sup> FG 6 <sup>15</sup>
<u>27<sup>9</sup></u> ƒ Rd    143 <sup>48</sup> ✓	<u>27<sup>0</sup></u>

5/24/07  
CLDY 50°

UNIVERSITY DRIVE  
BLUETOPS  
TOPTYPE II

STA.    +    HI    -    ELEV. LT.	
39+50	
39+13.2	
39+00	
38+50	
T.P. ƒ UNIV. 4.69 RT. 148.30 RT 6.04 at 38+00	
38+00	
37+50	149.63 RT.



SCALE:  
NTS  
APPROVED:  
REVISED:  
10/07

**GRADE STAKES/BLUE TOPS**

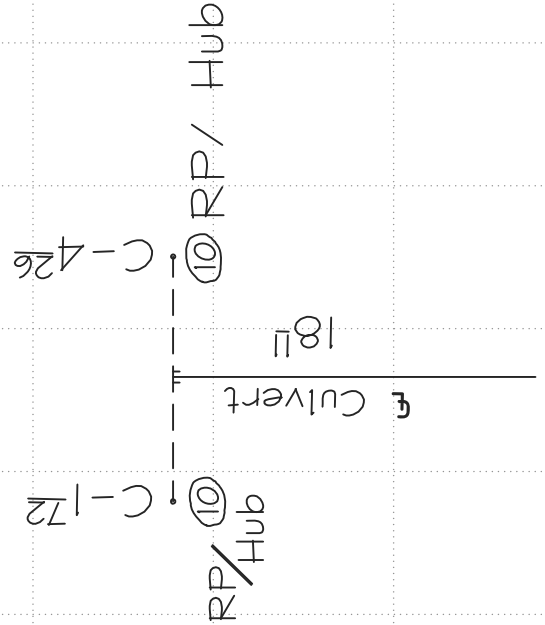
SECTION #  
65.02  
DETAIL #  
65-7



2150 42

Rd.

N. Rim MH at NW cor. E. R. Rd & Wildwood  
Page 65



CULVERT STAKES Eagle River

Party Chief 5-13-85 55° Cldy

Chnm. Wild NI II  
25' Glass Rod  
100' Chain

STA + HI - ELEV.

TBM 489.42 8.08 481.34 481.35 Rec.

8<sup>2</sup> 481.4 at outfall  
Exist. Ditch  
9<sup>1</sup> 480.3 Bottom<sup>5</sup>  
Exist. Ditch

0+67<sup>5</sup> N  
2+03<sup>2</sup> E  
RP(10)S 7.60 481.82  
RP(10)N 5.06 484.36  
Inv. Grade 480.10



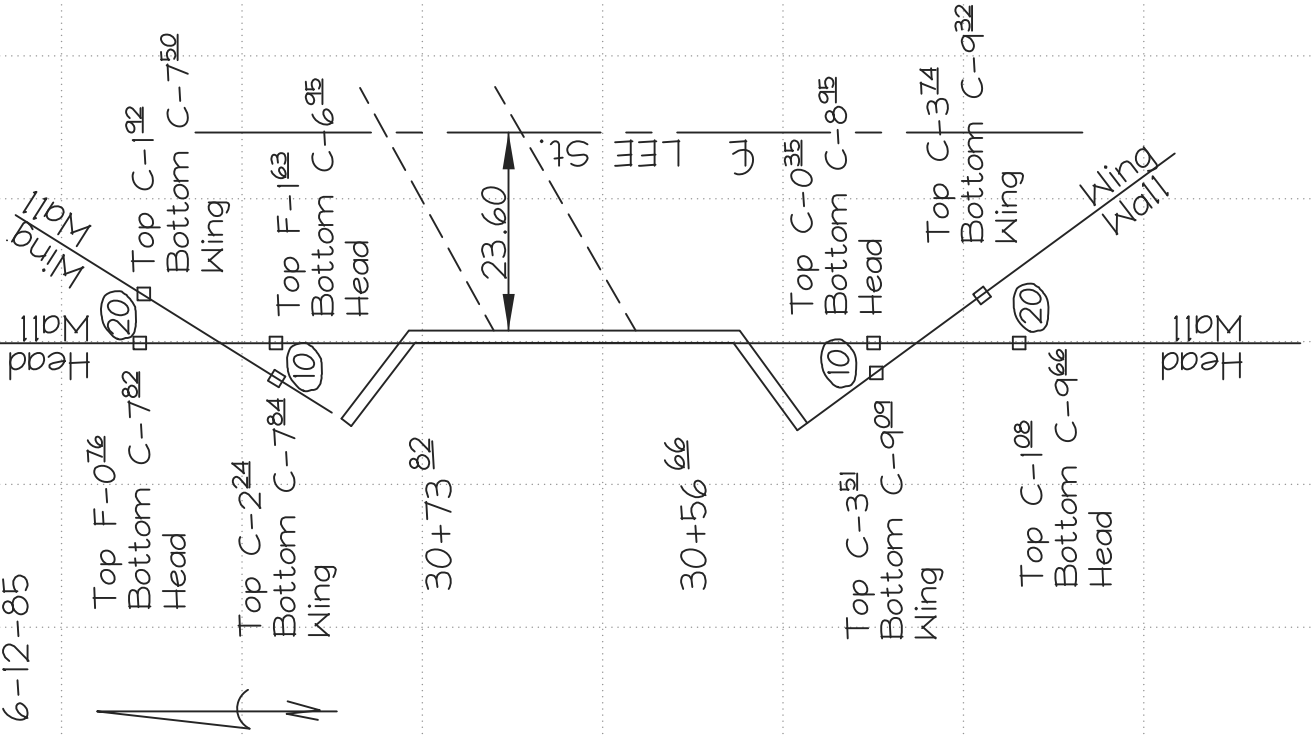
SCALE:  
NTS  
APPROVED:  
REVISED:  
10/07

**DRAINAGE STRUCTURES**

SECTION #  
65.02  
DETAIL #  
65-8

2150 42

60° F Cldy  
6-12-85



CONST STAKES for W. Headwall Lee St.

Party Chief T-16  
Instrm. NI-II  
Chmn. Rag Tape  
25' Glass Rod

FINISH  
ELEV. GRADE

STA - HI -

N.	Top of Wall	Bottom of Footing
197.83	181.40	189.48
197.83	191.72	183.90

Head Wall	Top of Wall	Bottom of Footing
30+73.82	191.72	192.48
197.83	190.83	183.90

Head Wall	Top of Wall	Bottom of Footing
30+56.66	193.56	192.48
197.83	192.83	183.90

S.	Top of Wall	Bottom of Footing
197.83	193.22	189.48
197.83	192.99	183.90

MUNICIPALITY



OF ANCHORAGE

SCALE:  
NTS

APPROVED:

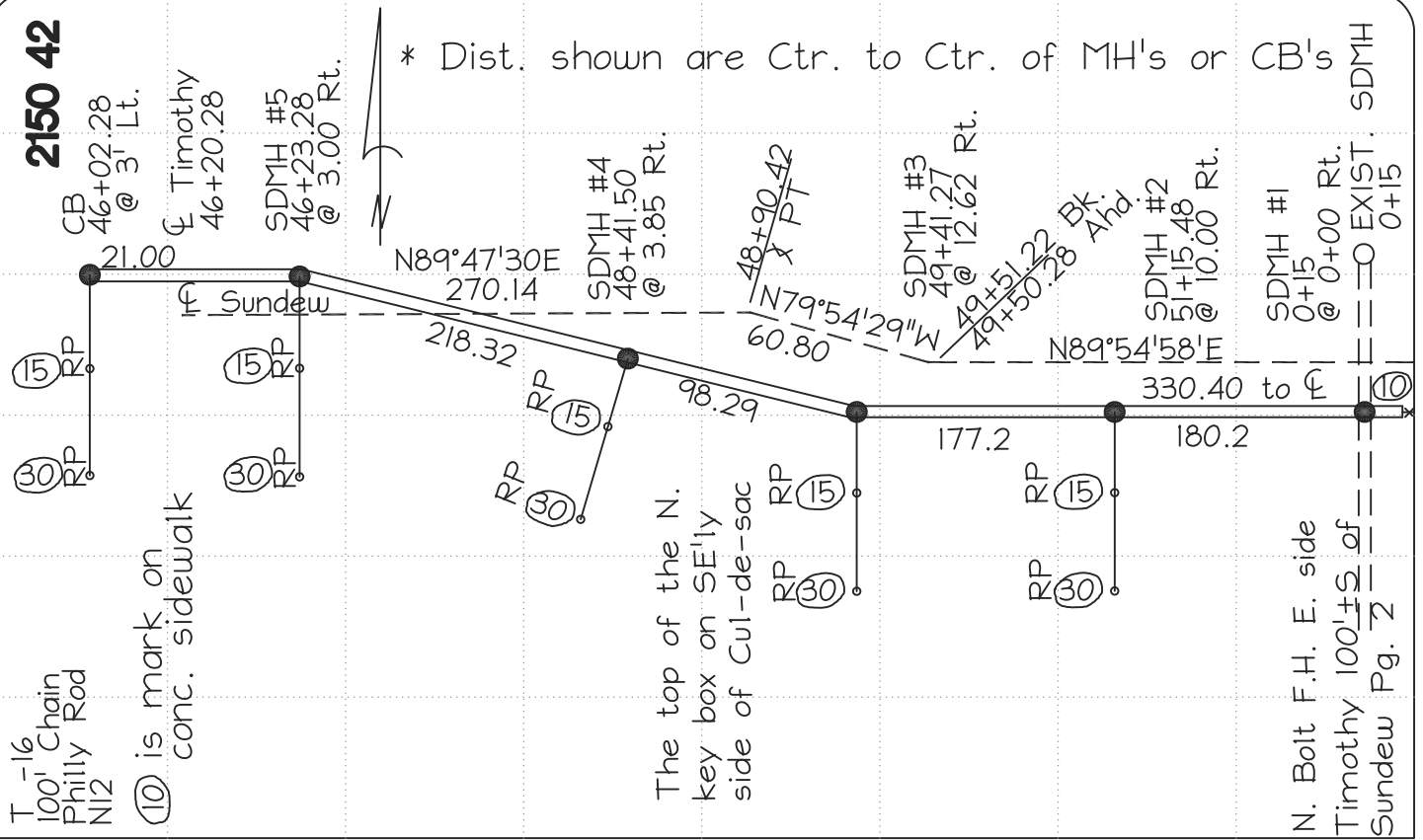
REVISED:  
10/07

# RETAINING WALL STRUCTURES

SECTION #  
65.02

DETAIL #  
65-9

**2150 42**



STAKE	STORM SEWER SUNDEW CIRCLE	Sept. 2, 1986 Clay Party Chief Chmn.
0 + 15	(10) 4.85	80.07
SDMH #1		
51+15.48	(15) 4.82	81.10
SDMH #2	(30) 6.65	78.27
49+41.27	(15) 3.48	81.44
SDMH #3	(30) 6.36	78.56
TP	3.62 84.92	10.29 81.30
48+41.50	(15) 14.07	77.52
SDMH #5	(30) 14.15	77.44
46+23.28	(15) 5.31	86.28
SDMH #5	(30) 5.46	81.13
46+02.28	(15) 6.51	85.08
CB	(30) 5.49	86.10
TBM STA.	4.21 + HI -	87.38
		ELEV.



SCALE: NTS  
 APPROVED:  
 REVISED: 10/07

**STORM SEWER LAYOUT**

SECTION # 65.02  
 DETAIL # 65-10

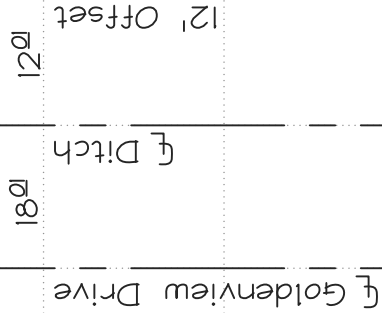
3111 966

CONSTRUCTION STAKES

OPEN DITCH

Goldenview Dr. 164th to 162nd

Party Chief 7-8-85  
 Instrm. Sunny 65°  
 Chainm. NI 2  
 Philly Rod



20+00	670.61	3.32	667.29	661.53	C-5 <sup>7/16</sup>
27+50	670.61	4.10	666.51	662.20	C-4 <sup>3/4</sup>
27+00	670.61	4.45	661.16	662.87	C-3 <sup>29</sup>

Spike in PP A-256-A B9 page 7  
 DESCRIPTION

TBM STA	2.07 +	670.61 HI	-	668.54 ELEV.	FINISH GRADE
---------	--------	-----------	---	--------------	--------------

MUNICIPALITY



OF ANCHORAGE

SCALE:  
 NTS

APPROVED:

REVISED:  
 10/07

DRAINAGE STAKES

SECTION #  
 65.02

DETAIL #  
 65-11

2179 014

Party Chief NI-II  
 Instrm. 25' Glass Rod  
 Chainm. 100' Rag Tape

RIGHT

$\frac{7.56}{18'}$  83.92F - 144

$\frac{7.38}{18'}$  84.10F - 1.62

$\frac{7.26}{18'}$  84.72F - 1.55

F.M. E Side Timothy - 100' of Sundew Cir  
 MOA FB 1985-4

CURB & GUTTER STAKES  
 SUNDEW CIRCLE

LEFT ♀

46+80  $\frac{6.69}{18'}$  84.79F - 0.52  
 85.36TC

46+60PUC  $\frac{5.69}{18'}$  85.79C - 0.07

BEGIN C&G  
 46+56.78  $\frac{5.77}{18'}$  85.71F - 0.06  
 85.77TC

Note: Hub/Tack set 0/3 offset to TBC.

TBM +4.10 91.48 8738 N. Bolt  
 STA + RT. - ELEV.



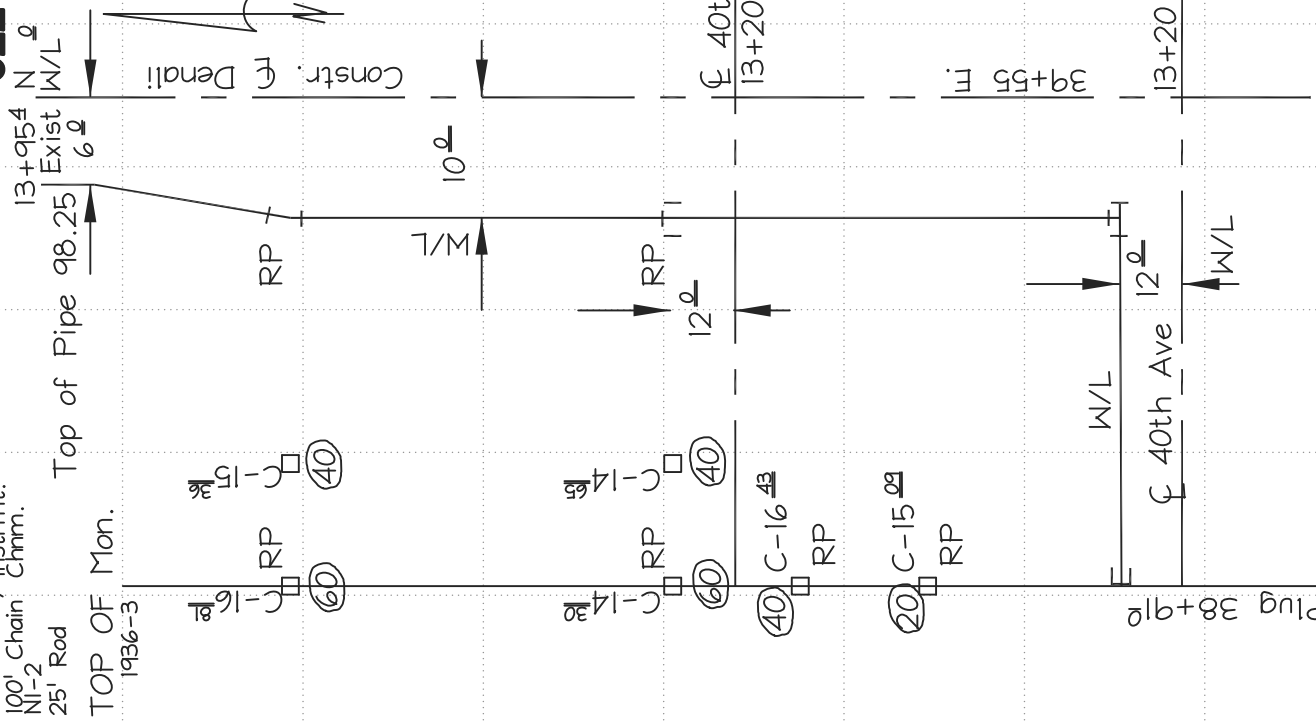
SCALE:  
 NTS  
 APPROVED:  
 REVISED:  
 10/07

# CURB AND GUTTER STAKES

SECTION #  
 65.02  
 DETAIL #  
 65-12

0224 067

5-21-84  
53°F Sunny  
100' Chain  
NI-2  
25' Rod  
TOP OF Mon.  
1936-3



CONST. STAKES W/L @ 40th & Denali	114.28	4.81	109.47	109.48
22°30' Bend 13+774 N		(60) 3.47 (40) 4.92	110.81 109.36	94.00
12 x 16 Tee 39+45 E 13+32 N	114.28	(60) 5.98 (40) 5.63	108.30 BOP 108.65	94.00
38+912 Plug	114.28	(40) 4.30 (60) 5.64	109.98 BOP 108.64	93.55
STA	1.32	+	112.96 ELEV.	FINISH GRADE



SCALE:  
**NTS**

APPROVED:

REVISED:  
**10/07**

# WATERLINE LAYOUT

SECTION #  
**65.02**

DETAIL #  
**65-13**

Top of BC SE cor. of Well House #7 1741-31